

❑ Ball Or Casters Transfer Unit BTU & CTU .

The units are mounted on tracks that can be fitted on regular RLG Side Channels and frames. These tracks actually replace rollers, and have the same top surface height as the rollers of the RLG conveyors, for smooth transfer of the conveyed item.

❑ وحدات تدوير و تحويل CTU & BTU .

يتم تثبيت اجزاء هذه الوحدات بدلا من الرولات و على الشاسيه النمطي لنوعية السيور
الرولات RLG لتحقيق امكانية تدوير او تحريك المنتج المنقول في أى اتجاه .
تتوقف جودة التداول على استواء و صلابة السطح السفلي للمنتج المنقول.

Factory :New Borg El Arab 2nd Zone
entrance 2c street 3 - entrance 2c street 5
Tel:+20-(03)-4624127 - 4624126 - 4624025
fax : (03) 4624291

Info@UnitelEgypt.com

Cairo Office : Corniche El Nile, Maadi, Cairo
Tel +20:(0)2-25266333
Fax +20:(0)2-25264888

Sales@UnitelEgypt.com



www.UnitelEgypt.com



/UnitelEgypt

BTU Ball Transfer Units

Features

UNITEL 's Ball Transfer Unit type BTU is a modular omni-directional section that allows conveyed parts to move in any direction.

A matrix of equally spaced ball units supports the item being transported. The contact surface must be rigid enough so as not to allow the supporting balls to sink into the contact surface.

For delicate surfaces such as cartons, it is recommended to use the CTU (Caster Transfer Unit) family of transfer units

Characteristics

The BTU units are mounted on tracks that can be fitted on regular RLG Side Channels and frames. These tracks actually replace rollers, and have the same top surface height as the rollers of the RLG conveyors, for smooth transfer of the conveyed item.

Applications

BTU Ball transfer Units are used in applications requiring omni-directional movement of the load, for example rotation, change of direction at cross points, etc...

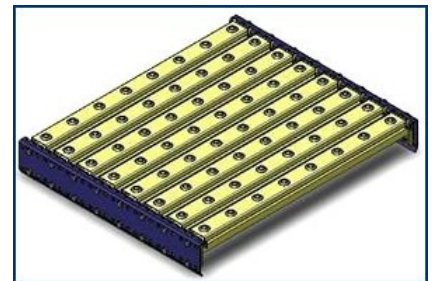
The surface must be stable enough to support the load without deformation. It is usually used in conjunction with solid metal or wooden pallets.

Avoid using BTU's with sacks, or heavy cartons.

Note:

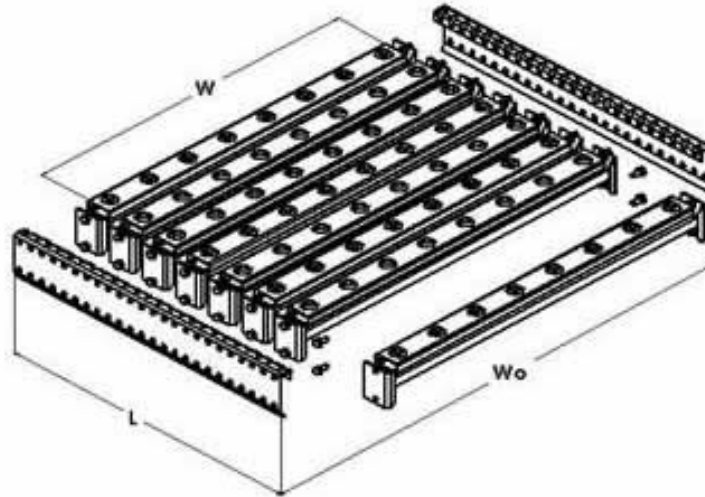
Each ball has a loading capacity of 250 N,

The ball spacing is 120 mm in the width direction, while the minimum pitch is 90 mm.



BTU Ball Transfer Units

BTU Specifications



Specifications

Ball Diameter	25 mm
Ball Loading Capacity	250 N
Ball Spacing along width	120 mm.
Ball Pitch	90, 120, 150 mm.

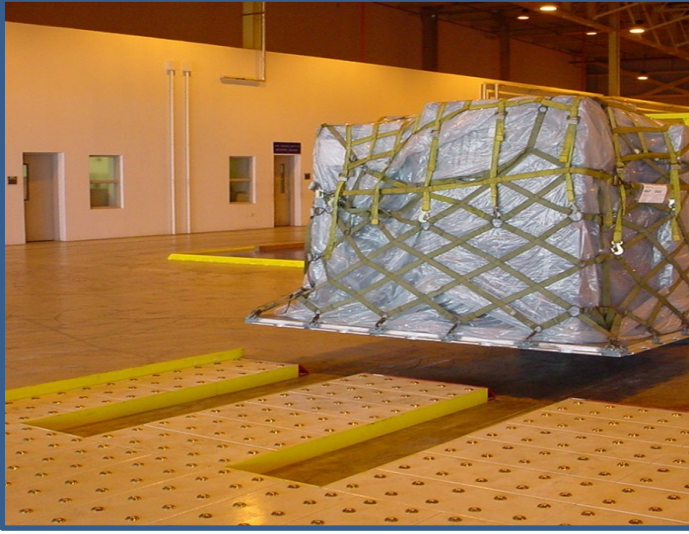
Dimensions

Standard Width (W) / Preferred Values

Outer Distance (Wo)

W	300	400	500	650	800
Wo	376	484	592	754	916

BTU Ball Transfer Units



مكتب القاهرة : برج القاتوينين كورثيش المعادى
تليفون : ٢/٢٥٢٦٦٣٣٣
فاكس : ٢/٢٥٢٦٤٨٨٨

مدينة برج العرب الجديدة - المنطقة الصناعية الثانية
يونيتل/ مدخل ٢ ج شارع ٣ - مدخل ٢ ج شارع ٥
تليفون : ٣/٤٦٢٤٤٢٤-٤٦٢٤٠٢٥-٤٦٢٤١٢٦-٤٦٢٤١٢٧
فاكس : ٣/٤٦٢٤٢٩١



www.UnitelEgypt.com



/UnitelEgypt

Sales@UnitelEgypt.com

Info@UnitelEgypt.com